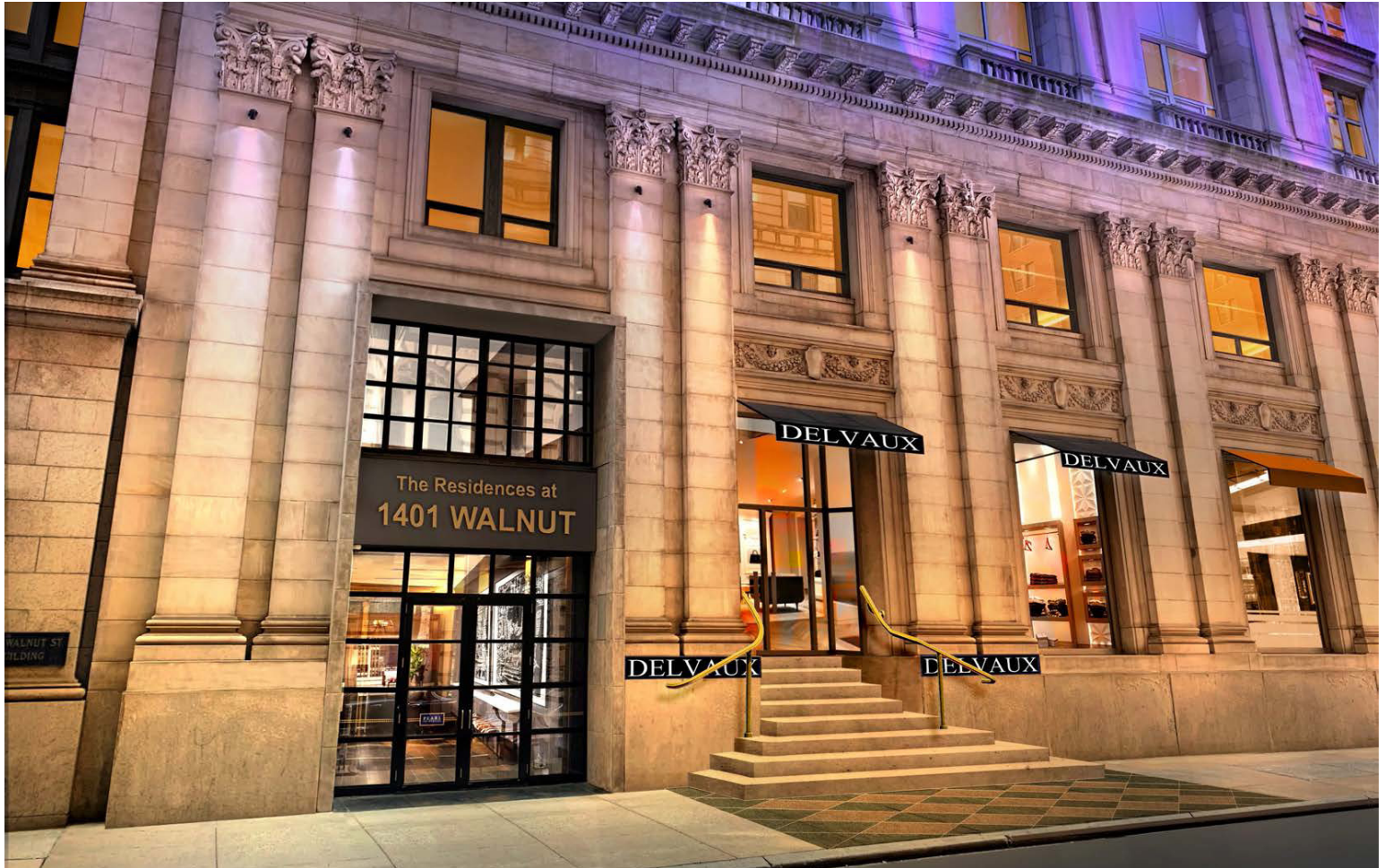


FOR LEASE: FLAGSHIP RETAIL SPACE

1401 Walnut St, Philadelphia, PA

EQUITY CRE



PROPERTY FEATURES & DETAILS

- Total SF: 17,735 (can demise)
- Lower Level: 8,975 SF
- 1st Floor: 3,238 SF
- 2nd Floor: 5,522
- Three floors of flagship retail space
- Located on the corner of Philadelphia's two most iconic streets with frontage on Walnut Street & Broad Street with corner visibility
- The property converges at the intersection of the Avenue of the Arts, Broad Street office Sector, Midtown Village & Rittenhouse Square
- Uniquely situated on Philadelphia's "High Street" while also surrounded by hotels, apartments & office density
- Dramatic architectural features, unmatched ceiling heights & excellent signage potential
- Adjacent to the iconic Bellevue
- Steps to public transportation & parking

CONTACT

STEVE JEFFRIES

sjeffries@equitycre.com

DIRECT 484.531.2250

CONOR TUNNO

ctunno@equitycre.com

DIRECT 484.531.2004

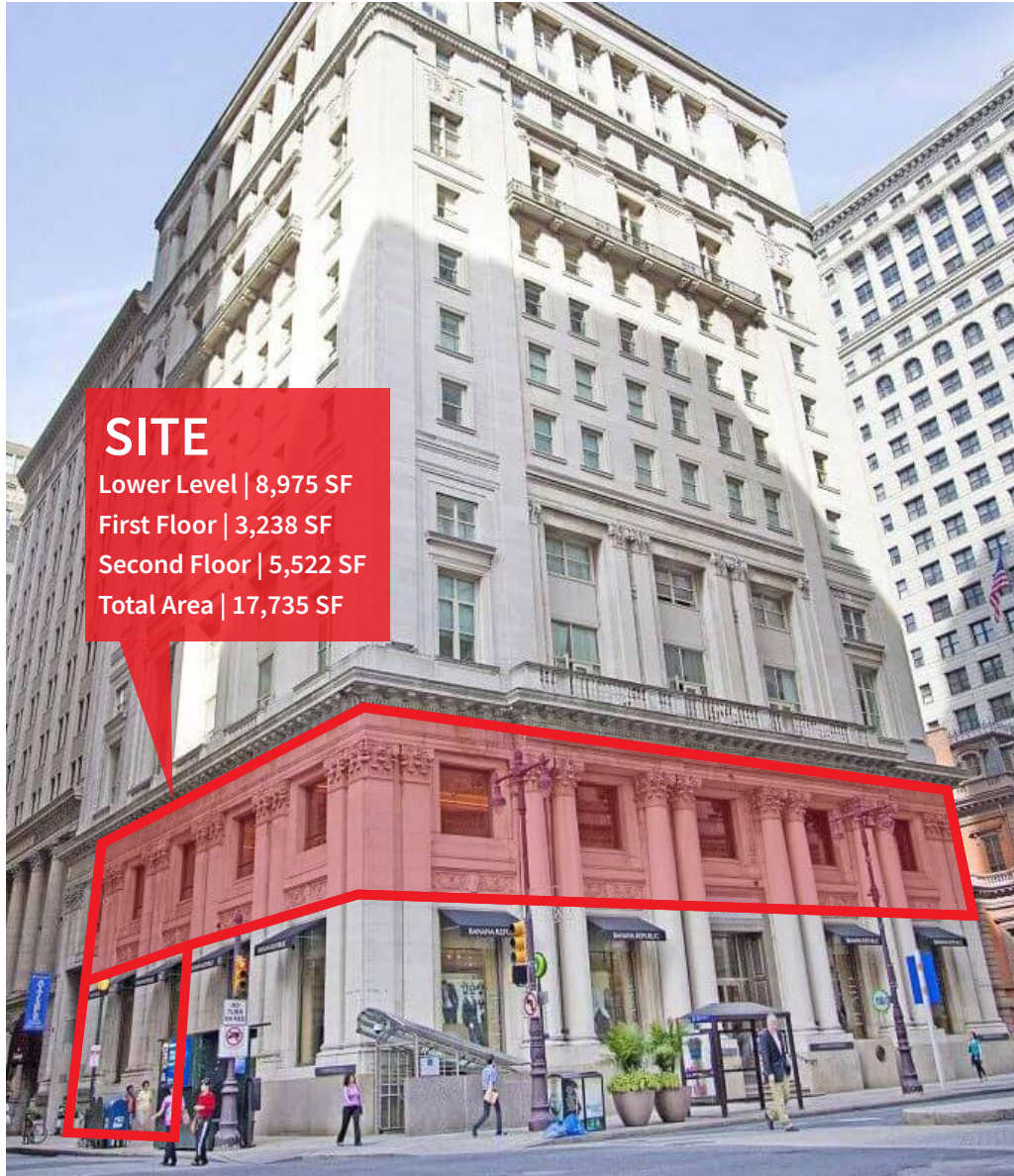
FOR LEASE: FLAGSHIP RETAIL SPACE

1401 Walnut St, Philadelphia, PA

EQUITY CRE

Center City Overview

“Philadelphia’s downtown retail market has been comprised of a diverse mix of locally owned stores and national brands. While more than 90 nationals opened in Center City during the last five years, local retailers still make up more than 75% of the overall tenant mix. Downtown shops and restaurants provide a mix of entry-level and skilled jobs for city residents and help contribute to Center City’s prominence as a regional shopping and dining destination offering unique brands and experiences.”

(via: Center City District)**WALK
SCORE****100****TRANSIT
SCORE****100****BIKE
SCORE****88****83%**

Storefront occupancy

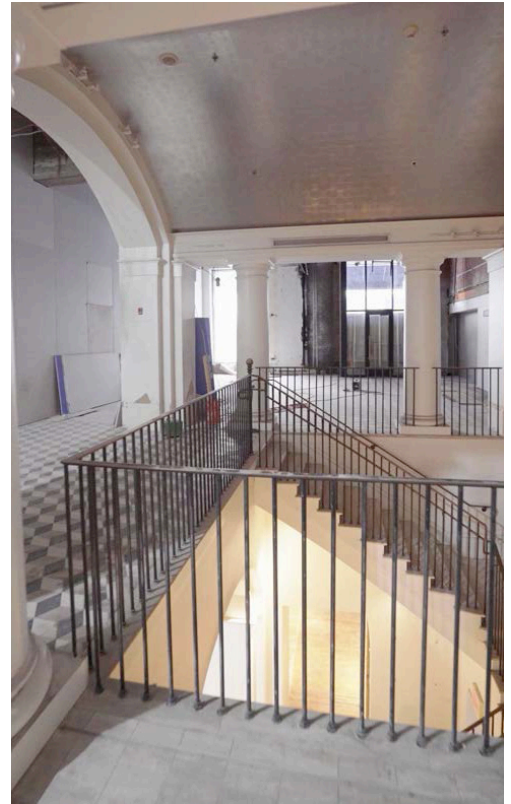
400,234Average daily
pedestrians (Feb 2025)**43%**Of Philadelphia jobs
located in Center City*(via: Center City District)*

FOR LEASE: FLAGSHIP RETAIL SPACE

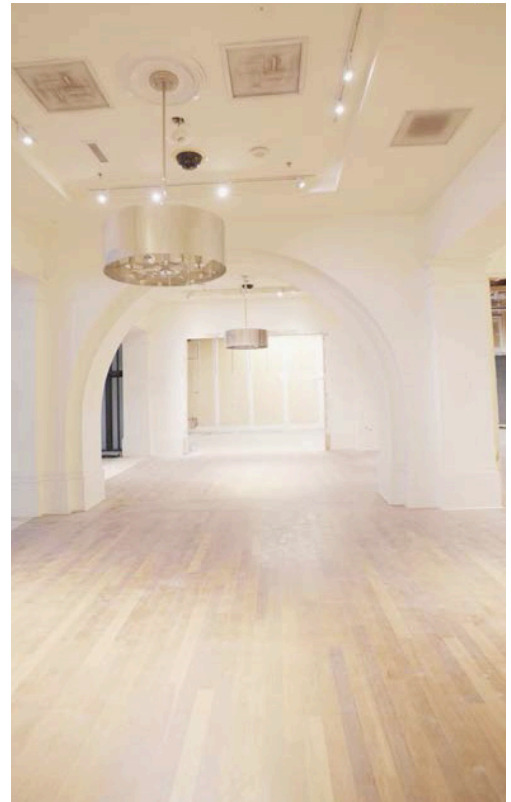
1401 Walnut St, Philadelphia, PA

EQUITY CRE

1st FLOOR



LOWER LEVEL

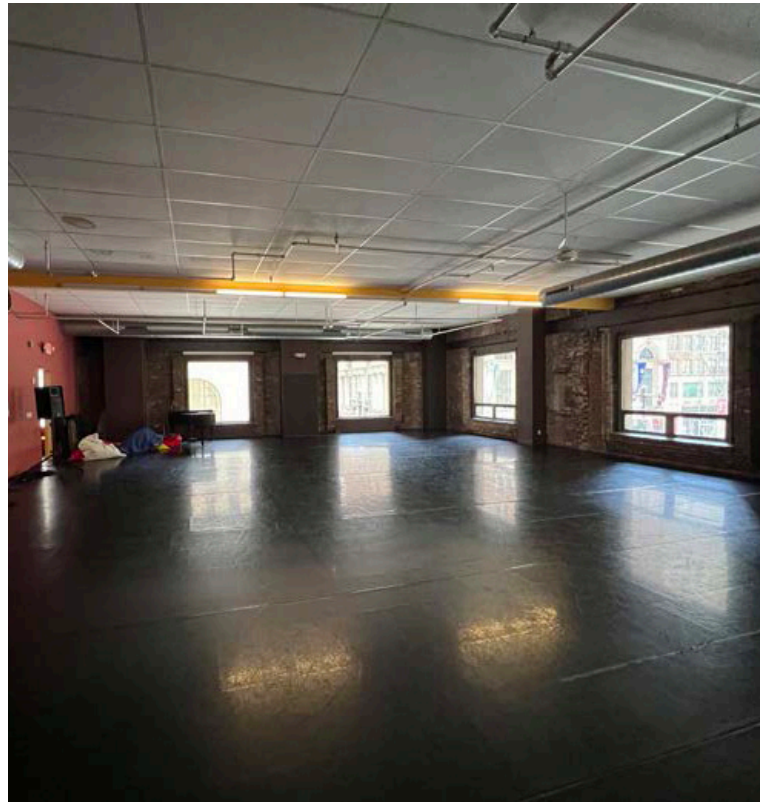
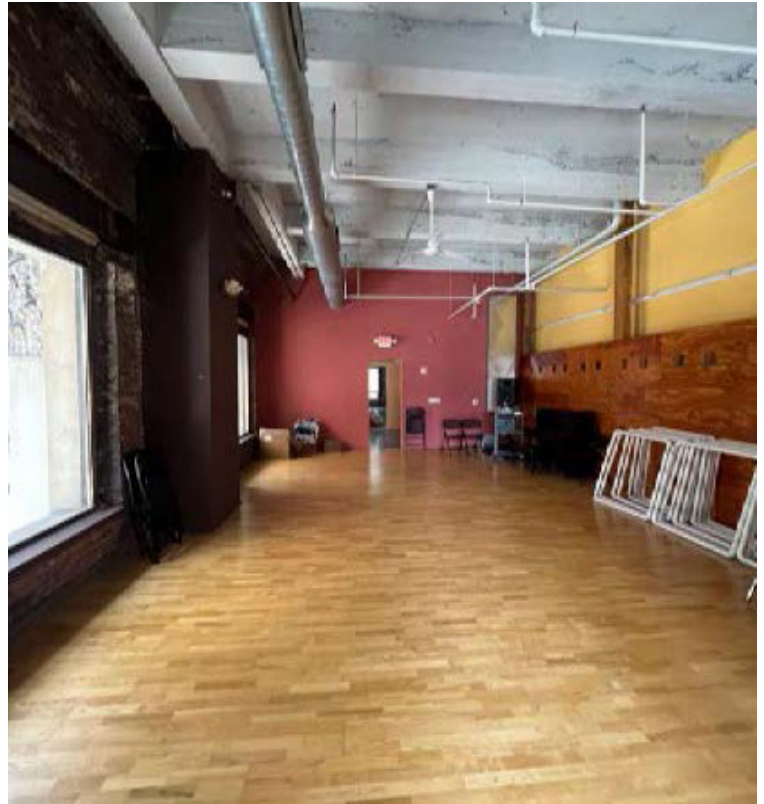
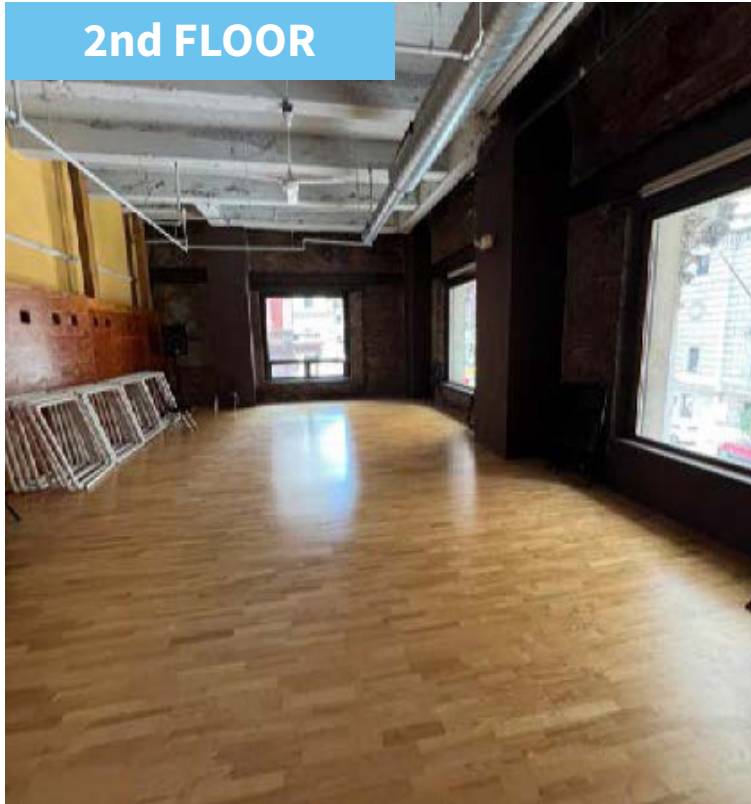


FOR LEASE: FLAGSHIP RETAIL SPACE

1401 Walnut St, Philadelphia, PA

EQUITY CRE

2nd FLOOR

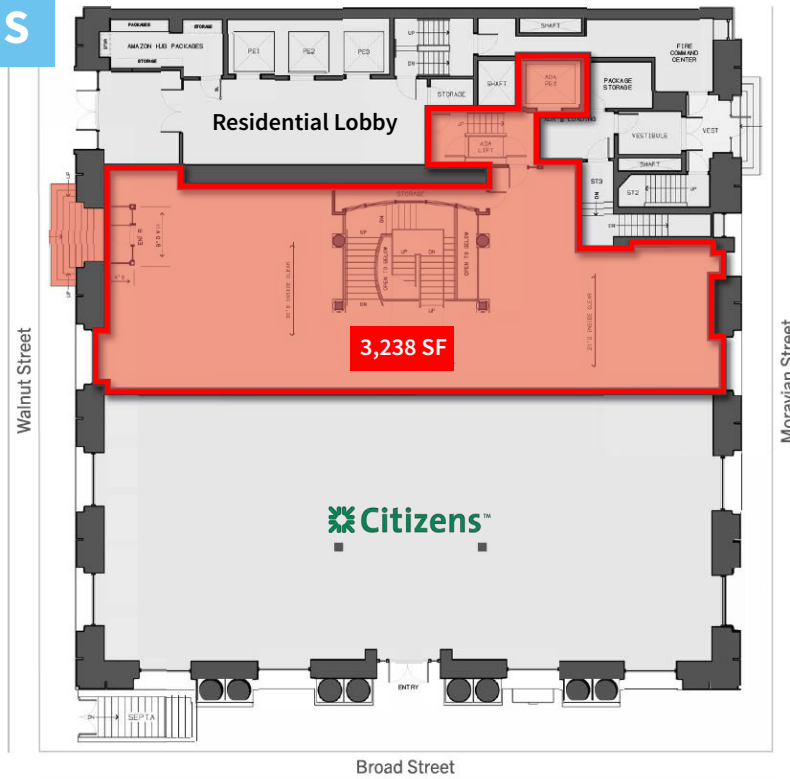


FOR LEASE: FLAGSHIP RETAIL SPACE

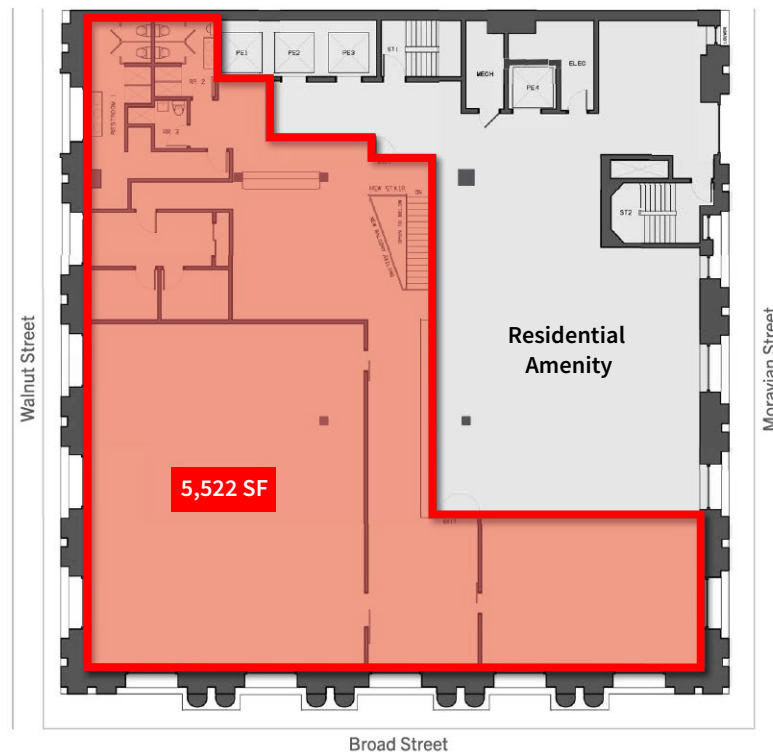
1401 Walnut St, Philadelphia, PA

EQUITY CRE

1st FLOOR PLANS

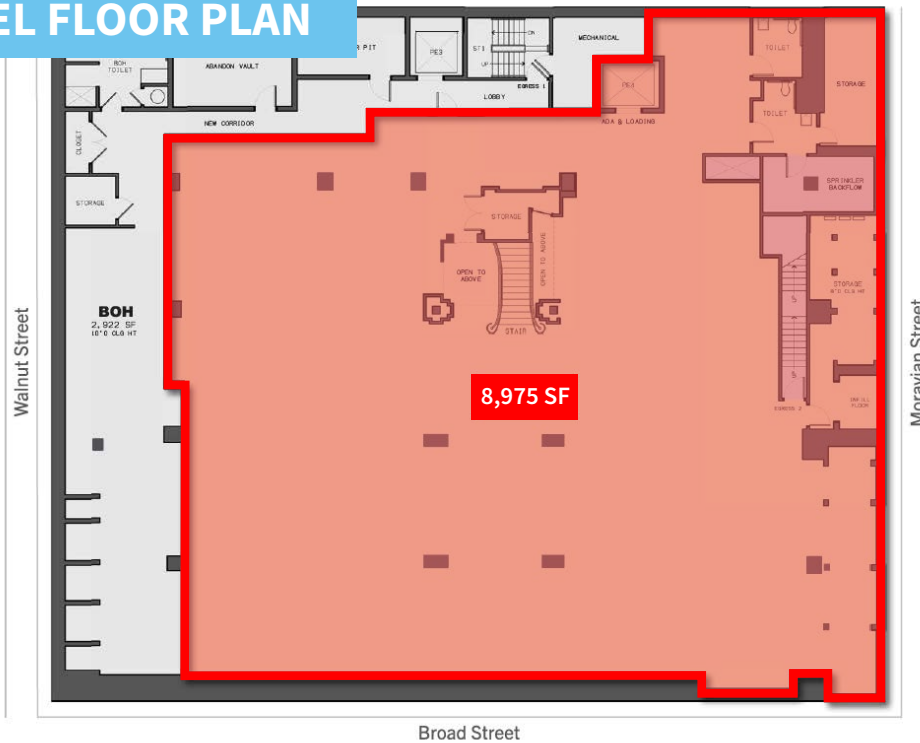
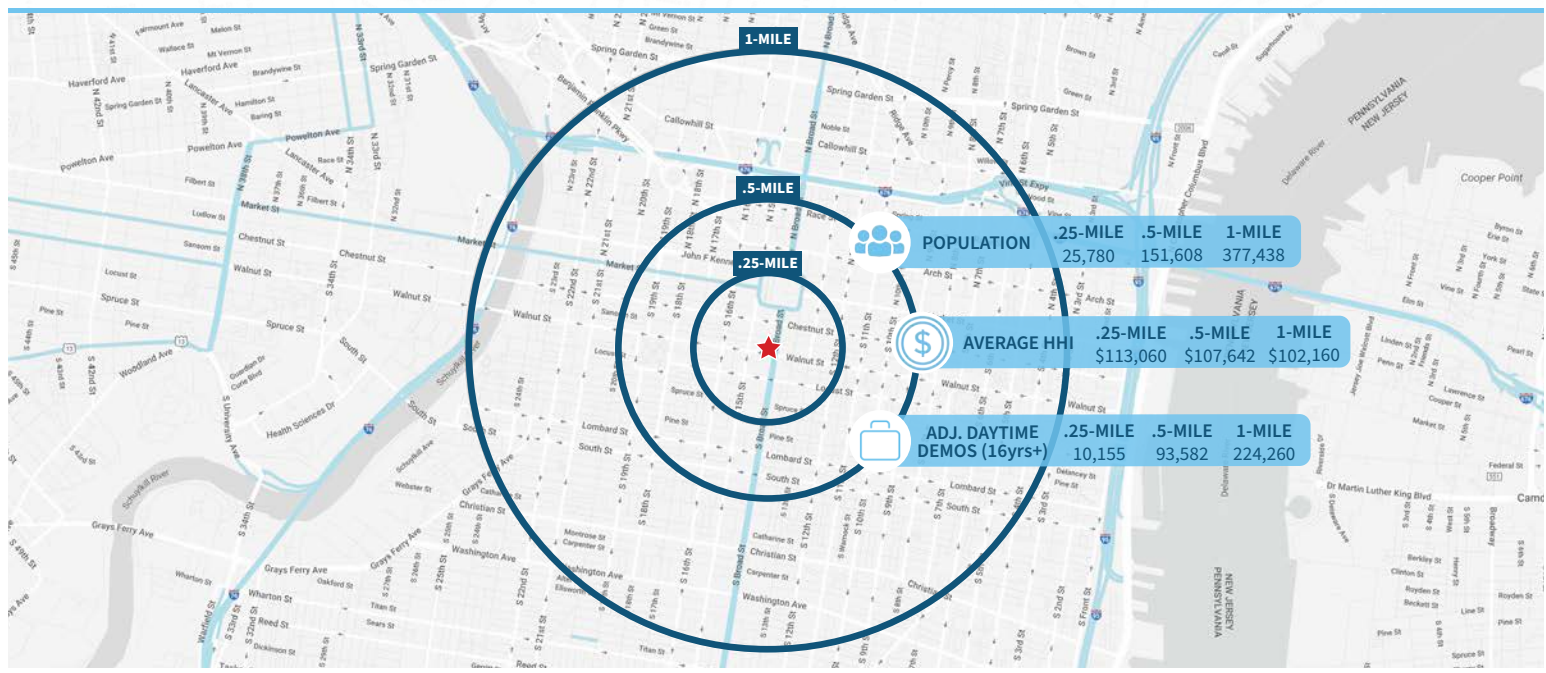


2nd FLOOR PLANS



FOR LEASE: FLAGSHIP RETAIL SPACE

1401 Walnut St, Philadelphia, PA

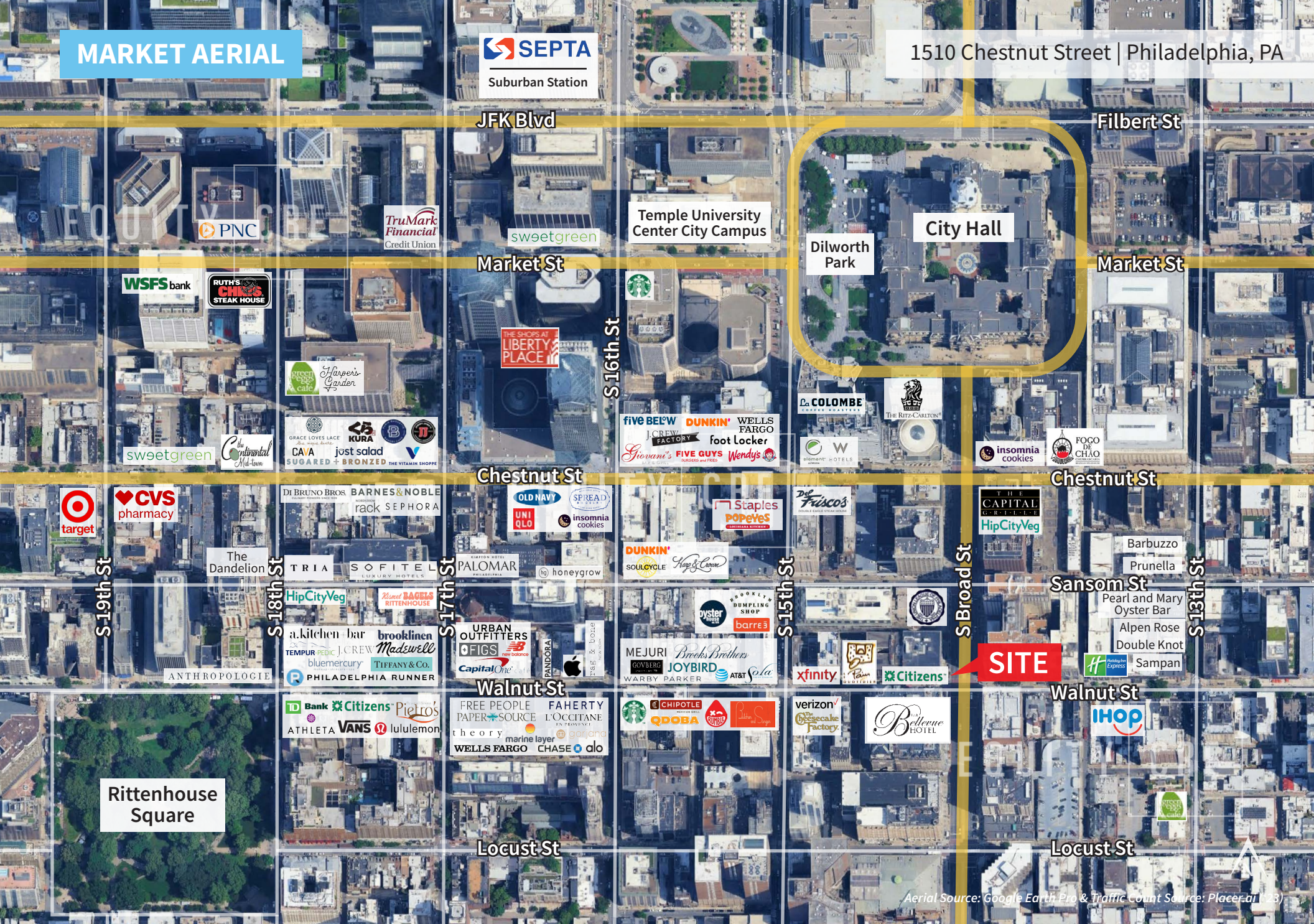
EQUITY CRE**LOWER LEVEL FLOOR PLAN****Demographic Overview (0.25, 0.5, 1-mile radius)****The right space. The right move.****CMRE** CAPITAL MARKETS
REAL ESTATE NETWORK

Information concerning this offering is from sources deemed reliable but no warranty is made to the accuracy thereof and it is submitted subject to errors, omissions, changes of price or other conditions, prior to sale or lease or withdrawal without notice. Equity CRE is licensed in PA, NJ, & DE. Steve Jeffries & Conor Tunno are licensed salespersons in PA.

03/25

MARKET AERIAL

1510 Chestnut Street | Philadelphia, PA



Aerial Source: Google Earth Pro & Traffic Count Source: Placerati (23)